

*Issue 23*  
Spring 2018



# THE BUTTRESS

PRESERVING BRISTOL CATHEDRAL

*Inside this issue ~*

---

Fitzhardinge Society  
Annual Dinner

The Organ Appeal Update

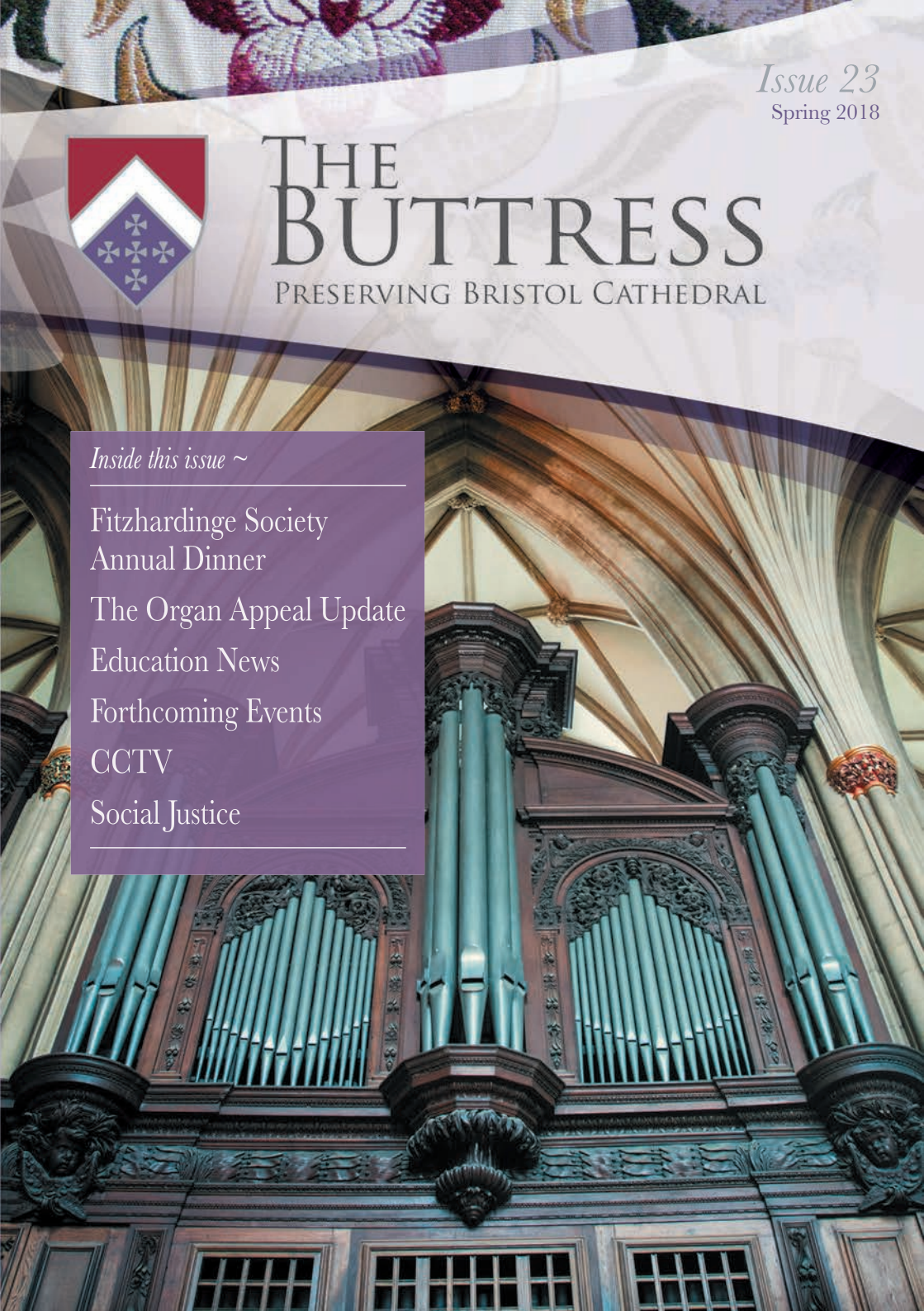
Education News

Forthcoming Events

CCTV

Social Justice

---



## THE DEAN WRITES...

Eighteen months ago, there was a significant crisis in the life of English cathedrals. One cathedral faced the very real prospect that the bank would extend no more credit. In another, a bishop lost confidence in a dean and published a damning visitation report.

In April last year, the two archbishops set up a 'Working Group' to review aspects of cathedral management and governance.

The Working Group published their report in January. It runs to one hundred pages and makes seventy-five recommendations. If you feel you want, or need, to know more, we will be happy to discuss this.

It is virtually certain that we are about to see a very significant shift in the way this, and other, cathedrals run.

Conscious of this national debate, Chapter invited Richard Bacon, a man experienced in governance and financial audit, to report on the specific situation here at Bristol. His report makes encouraging reading. The financial position is stronger than it has been and we have significantly increased our reserves. Morale is good and we have a strategy which sets realistic goals. Last Christmas, despite adding another service and a second celebration of Carols by Candlelight to the diary, we were still full to bursting and, once, had to turn significant numbers away. We will add another service next Christmas. We have a more ambitious



The Very Revd Dr David Hoyle  
Dean of Bristol

programme of lectures and talks, we do more work with more schools and we have a real and growing involvement in issues of social justice. As I write we are installing a new, necessary and expensive CCTV system. Thanks to the generosity of donors we have just completed a stunning repair of the west window.

It is a good story and I am grateful to the very many colleagues and volunteers who make it possible. But these two reports and recommendations contain a number of challenges. With more ambition comes more responsibility. We will have to work harder still on project management and financial scrutiny. A national review of safeguarding will generate new processes for us. New challenges, new costs. There is no magic income stream for a cathedral whose first responsibility is prayer and praise. Your support is what helps to make everything else possible. Thank you.

**The Very Revd Dr David Hoyle,  
Dean of Bristol**

# NAVE DINNER

## THURSDAY 4<sup>TH</sup> OCTOBER

Join us for this spectacular evening of food, fellowship and music - it's a real highlight of the Trust's year:

The evening will include a drinks reception, a delicious 3 course dining experience, music and readings.

This year, we're creating a large central Fitzhardinge Table, where individuals or small groups can meet, chat and socialise.



Tickets are £95 per person. Separate tables of 10 are available at a special rate of £900. Why not celebrate with a group of friends, family or work colleagues.

For further information, or to book tickets, please contact Wendy Pradalie [wendy.pradalie@bristol-cathedral.co.uk](mailto:wendy.pradalie@bristol-cathedral.co.uk) 0117 946 8184 or return the reply slip enclosed with this mailing.



# THE ORGAN APPEAL UPDATE

Thanks to the exceptional generosity of local trusts, foundations and individuals, we have been able to appoint Dr William McVicker, a nationally recognised expert, as our chief project advisor.

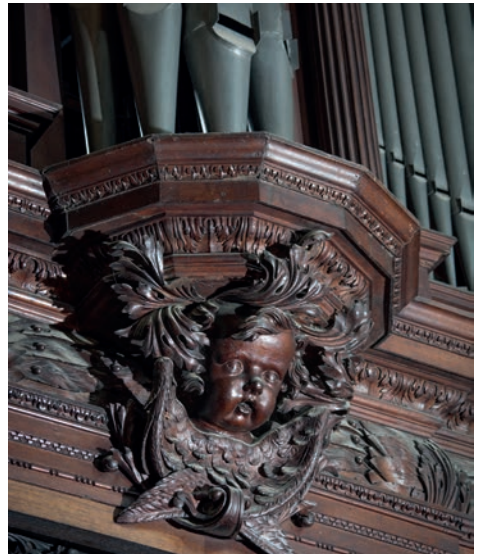
The organ consists of an historic Rhenatus Harris case (c1685) and a 1907 Walker instrument that sits inside. This particular Walker instrument was built in the Edwardian era by a master craftsman at their height of their powers and creative expertise. The result was a Romantic English organ with an exceptional dark and rich tone. For over a hundred years this sound has accompanied our daily round of worship, concerts and recitals. This is now at risk - the instrument has deteriorated over time, and is in need of a once-in-a-generation renovation to ensure its future reliability

Since 1907, there have been various phases of repair and restoration in the early 1960s, the 1990s and between 2004-2009. Despite these best efforts the increasing fragility of the organ is now disrupting the pattern and nature of our worship, and it is becoming much harder for organists and visiting recitalists to play the instrument properly. The severity of the situation has been recognised by the cathedral, and measures have been taken to understand what's happening, so that a programme for repair and restoration can be developed. This will be one of the most significant projects that Bristol Cathedral will have ever embarked upon and one that requires the highest attention to detail and patience. The Cathedral Fabric Commission for England (CFCE) are already closely involved with the work, and are offering advice, as our ideas take shape.



***"I am not simply being biased when I say that ours is one of the best organs in any English cathedral. If the heart of the cathedral is the altar, then the organ is the lungs, making possible an almost daily musical miracle, but these lungs are failing."***

**The Very Revd Dr David Hoyle,  
Dean of Bristol**





**Our initial ideas for a programme of work include the following:**

- Cleaning and restoring the Renuart Harris case, and repairing the historic pipework.
- Cleaning the pipes.
- Changes to the pneumatic key action to ensure reliability. This is a highly technical and specialist area of work and a number of options will be carefully weighed and considered.
- Making changes to enhance the organ's original Edwardian character. This could include reversing some later tonal alterations and/or adding new stops. The stop creates the sounds of particular instruments, like woodwind or trumpet.
- Improving the keyboard layout.
- As part of the project we will also be researching the history of the instrument more thoroughly, drawing out stories and archival records for exhibitions, talks and events. We will also look at ways in which we can make the instrument more accessible to aspiring musicians and new audiences.

**Please find enclosed a donation form towards this project, for your careful and prayerful consideration.**



# THE WORK OF THE EDUCATION DEPARTMENT

With over 2,700 school children coming to Bristol Cathedral in 2016-17 for tours and workshops, we began September 2017 full of energy and enthusiasm to welcome young people from Bristol and beyond to our education days. Here are some of the highlights:



## **The Big Draw**

In October we hosted the Big Draw, our annual celebration of all things arty. The theme was 'moving lines' which saw 240 children creating new shapes out of lots of lines and constructing Aardman's very own Shaun the Sheep ready to be animated!

## **Trans-Atlantic Slave Trade**

Our slave trade workshop combines history, geography and reflective activities. This invites children to look at parts of the cathedral linked to the trade and allows them to consider the impact of slavery today.

*'Our trip to the Cathedral helped the children learn more about Bristol's connection with the slave trade...the sorting activity, and particularly the questions about freedom really made them apply their critical thinking skills.'*

## **Christmas Trails**

In December the cathedral was transformed into Bethlehem and visited by school children hunting for the nativity characters. By visiting Mary's room, the shepherd's hillside and the inn (to name a few) the children are able to step into the Christmas story in a very unique way. This is always a popular trip!

## **Senior Schools' Art Exhibition**

At February half term we are always delighted to host the senior schools' art exhibition. This year, 14 schools shared the work of their talented artists, which never fails to impress our team of judges from Bristol Savages.

## **Experience Easter**

In the run-up to Easter we launched our first Experience Easter; an interactive trail for schools and families which tells the story of Holy Week and reveals the meaning of Easter. This got off to a great start with 120 children walking the trail, ending with a chocolate egg!

## **Coming up**

Still to come this year we have 4 *Moving On* days in June, where Year 6 children from different schools come together to prepare for the transition to secondary school.

Thank you to all the schools who have visited us and we hope to see you again soon!

**Frances Taylor and Fiona Dorman**  
– Education Team

# FORTHCOMING EVENTS

## SAVE THE DATE

On **Sunday 13 May 2018** at 2.15 pm, we are invited to **Berkeley Castle** for a private tour followed by afternoon tea in the Great Hall. Join us as we discover more about the family behind the founding of Bristol's Augustinian Abbey. This event is for members only. **Tickets are £25.**

The annual **High Sheriff's Concert** will take place on **Friday 8 June**, with a theme of Celtic Connections. Internationally renowned harpist Catrin Finch is one of the most accomplished harpists of her generation, delighting audiences across the UK and worldwide. She will perform works by Bach, Debussy and Handel and her own **Celtic Concerto**. Other highlights of the concert include the **Poldark Suite** (Bristol Première) by Anne Dudley arr: Jean Hasse and **Summer**, from **The Four Seasons Recomposed**, Antonio Vivaldi/Max Richter

Please contact **Wendy Pradalie**  
[wendy.pradalie@bristol-cathedral.co.uk](mailto:wendy.pradalie@bristol-cathedral.co.uk)  
 0117 946 8184 to book. Please make all cheques out to 'Bristol Cathedral Trust' or make an online payment using the bank details on the back of the magazine.

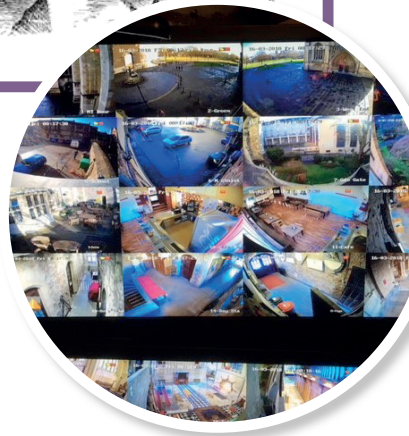
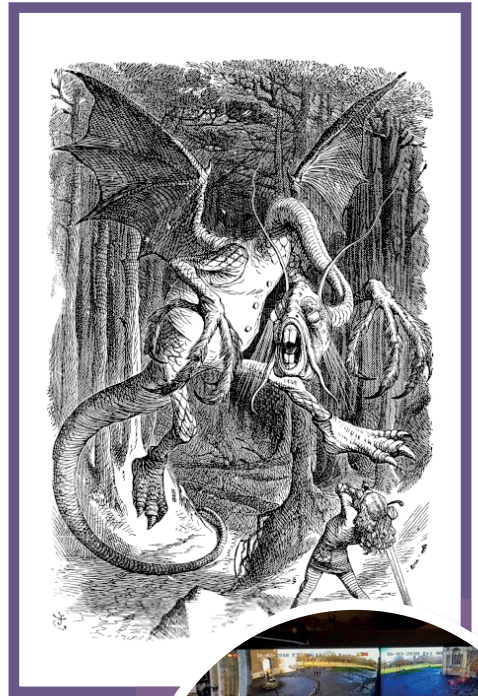


# ADVENTURES IN CCTV-LAND

Like Alice through the looking glass a Chapter Clerk often enters strange new worlds which have their own ways of operating.

In our latest instalment the Home Secretary (aka 'the Duchess') helpfully granted us funding for a new CCTV system as part their support for places of worship which are vulnerable to hate crime. So far, so very good, but the rabbit hole rapidly opened up before us; the Home Office made the decision in September, but only told us about it after Christmas, along with the news that the installation had to be completed and the money claimed back by the third week of March ("Oh my ears and whiskers!"). This meant we had to get moving very quickly to get the necessary permissions from various bodies (aka the 'Walrus and the Carpenter') and to start project delivery in February. Having six impossible things to do before breakfast is not unusual in Cathedral-land – so we simply added this to the list and carried on.

Humpty-Dumpty famously said to Alice "When I use a word, it means just what I choose it to mean – neither more nor less." Having got our permissions we began installing 'pig-noses', 'bullets', and 'domes', which all turned out to be different kinds of camera. Add recorders, new monitors, and a keyboard and hey presto the Verger cubby is now a state of the art operating centre. So far there have been no sightings of a Jabberwock with vorpal blade on our new screens, but it's probably just a matter of time. The Head Verger, I am pleased to say, is grinning like the Cheshire Cat...





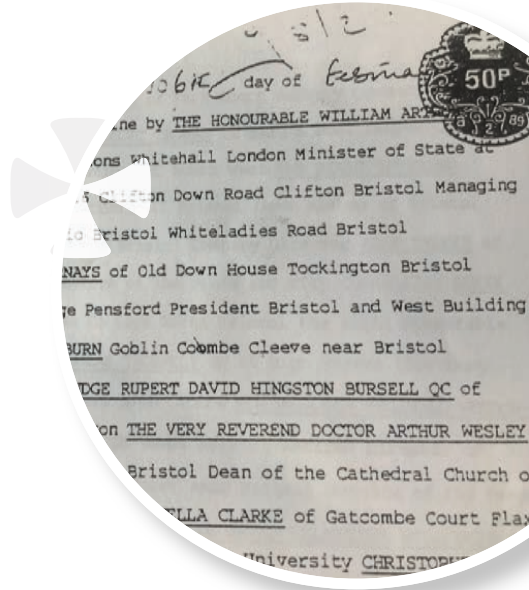
# THE TRUST DEED

Changes are happening at Bristol Cathedral Trust. The number and scale of projects that are being undertaken is growing and aspirations for future projects continue to be ambitious.

If you have visited the Cathedral recently you will note the improved heating, the new welcome area, the much improved toilets and the gloriously restored rose window. Other less visible projects have been work on the boilers, new CCTV systems, people counting equipment, radios for cathedral staff to help with safety and security, and more. The next couple of years will be dominated by the organ appeal however this will be in addition to, rather than at the expense of, other essential works or those set out in the Cathedral strategy which we will continue to support.

However, we need to ensure that as the Trust's activities progress, our legal structure and governance documents don't leave us languishing in the 20<sup>th</sup> century.

The original Trust Deed was written in 1989 and whilst fit for purpose at the time, is no longer suitable to reflect the recent changes in corporate governance policies in the charitable sector; nor does it give a specific and accurate representation on what the objectives of the Trust are. By way of example, the Deed allows for the Trust to support the "church" when we are all clear that the overarching objective is to support "Bristol Cathedral" and funds have always been used for this purpose.



In conjunction with this, the Trustees are reviewing the most appropriate structure for the Trust and over the coming months you may notice a couple of subtle differences if you look closely at the Trust letterhead, notices or website. We will of course aim to make the transition as seamless as possible for our supporters but we may require you to sign new gift aid declarations to ensure that we can continue to claim tax relief from the government.

Our new Articles which will set out our aims, objectives and rules will look to ensure that

- our objectives are clearly aligned with the strategy and vision of the Dean and Chapter;
- a close and cohesive, albeit independent, working relationship between the Trust, Dean and Chapter is forged, and
- best practice is adopted with regard to corporate governance.

**Catherine Lynn-Jones**  
Treasurer



# SOCIAL JUSTICE



On the evening of Wednesday 14 March, Bristol Cathedral played host to a public event on homelessness titled 'Bristol Homelessness: Policy and Practice' as part of its ongoing programme of work in this area. Revd Canon Martin Gainsborough, who organised and chaired the event, shares his reflections.

The event attracted a lot of attention and was sold out, at least in part owing to a controversial case involving a couple rough sleeping in Bristol city centre. (<https://www.bristolpost.co.uk/news/bristol-news/bid-ban-homeless-couple-bristol-1364779>) The speakers at the event were Richard Hawkridge from Streetwise, which is a multi-agency body which tackles anti-social behaviour; and Jonnie Angel from the Christian charity, Crisis Centre Ministries, which runs Bristol's Wild Goose café.

There were strong opinions expressed at the meeting and some anger directed at the speakers, including from people who are themselves homeless.

***'Never mind the housing shortage, someone shouted, 'what about all the empty housing around now?'***

***'Rich people don't care. The rich people take everything. That's the problem,'*** said another:

And to the speaker from Streetwise: ***'Why are you moving on me when I'm just selling the big issue...I'm not anti-social. What's anti-social about selling the big issue?'***

To which Richard Hawkridge was at pains to emphasise: neither selling the big issue or

being homeless are anti-social behaviour; and Streetwise does everything in its power to work constructively with people who are homeless to help them get off the streets without having to resort to the courts. This, he emphasised, is very much a last resort and an absolute minority of cases end up in the courts.

Jonnie Angel gave an inspiring account of why the Wild Goose café exists as an example of Christian social action. Moreover, he said that while some people cause trouble at the Wild Goose, the vast majority do not and are extremely grateful for the help and support they receive.

The strength of feeling at the meeting underlines the importance of getting people together in this way, particularly people who don't often get a chance to meet like this.

Bristol Cathedral is pleased to play host to this kind of discussion and will continue to do so. It is particularly important that those who have the power to make decisions which affect people's lives hear from those whose lives are affected. While conversation may not always be easy, we need to hear each other and where we disagree we need to learn to disagree well.

For a more theological reflection on the evening see the sermon preached on Passion Sunday, [www.bristol-cathedral.co.uk/faith-worship](http://www.bristol-cathedral.co.uk/faith-worship)

# NO MAN'S LAND

## WOMEN'S PHOTOGRAPHY

### AND THE FIRST WORLD WAR

*No Man's Land* offers rarely-seen female perspectives on the First World War, featuring images taken by women who worked as nurses, ambulance drivers, and official photographers, as well as contemporary artists directly inspired by the conflict. It runs from 6 April - 1 July, admission is free and all are welcome.



Louise from Soldier (2011-16)  
© Alison Baskerville

Commemorating the First World War Centenary, *No Man's Land* features photographs by three women of the epoch, alongside three women making work a century later:

Highlights include frontline images by nurses Mairi Chisholm and Florence Farmborough, some of which have never been exhibited or published; photographs by Olive Edis, the UK's first female official war photographer despatched to a war zone; and new work by

contemporary photographer and former soldier Alison Baskerville. This is the premiere of the nationally-touring exhibition before it travels to Bristol Cathedral, The Turnpike in Leigh, and Bishop Auckland Town Hall.

#### **Dr. Pippa Oldfield, Head of Programme at Impressions Gallery**

and curator of the exhibition, says, *"Most people think of war photography as images of male soldiers, made by photojournalists in the combat zone. However, the work in No Man's Land shows many other ways to photograph war, offering different viewpoints by women who have historically been excluded. I hope visitors will be moved and surprised by what they see"*.

#### **Alison Baskerville, exhibiting photographer,**

says *"It's a privilege to be exhibiting alongside such inspiring and fascinating women. Despite the distance of a hundred years, their images are still so raw and powerful. As someone who has served in Afghanistan, I recognise the challenges of being a women in a war zone, and the importance of sharing that story"*.



## VISIT US

Welcome to Bristol Cathedral.  
Admission is free. Donations are gratefully received and support the life and work of the Cathedral.  
All are welcome.

### Finding us

---

Bristol Cathedral, College Green, Bristol, BS1 5TJ

**T: 0117 926 4879**



/bristolcathedral



@BristolCathedra



bristolcathedral

[bristol-cathedral.co.uk](http://bristol-cathedral.co.uk)

### The Cathedral is open to visitors Monday-Friday 8am – 5pm Saturday-Sunday 8am – 3pm

---

Occasionally there are special services and events which mean opening times change. Please check the website for more detailed information about what is happening.

### Loyalty Cards

---

As a thank you for your continued support of Bristol Cathedral, we are delighted to enclose an exclusive Loyalty Card, giving you access to discounts and offers throughout the year in both the Cathedral Café and Shop.

### The Cathedral Café and Garden

---

#### Monday to Saturday, 10am - 3pm

You can find the Café at the end of the Cloister, past the Chapter House. It offers a menu of refreshments, light meals and snacks, together with homemade scones, pastries and cakes. The Café is breast-feeding-friendly and highchairs are available. Our beautiful, award-winning Cathedral Garden has a courtyard eating area which is popular in fine weather.

### The Cathedral Shop

---

#### Monday to Saturday, 10am – 4pm and after the Sunday morning service.

You are very welcome to browse our range of gifts, books and Fairtrade products including:

- Bristol Cathedral souvenirs - guidebook, postcards, mugs, notebooks and tea towels
- CDs - recordings by the Cathedral Choir and other organ and choral music
- Bristol Blue Glass and products from local artists
- Children's gifts - games, traditional wooden toys and story books
- Bibles, religious publications and local interest books

### Photography

---

Photography and flash photography is allowed in the Cathedral, except during services, school events, concerts or when choirs are rehearsing. For commercial photography or to use a tripod, please contact Kerry Vernon, **0117 946 8184**

**[kerry.vernon@bristol-cathedral.co.uk](mailto:kerry.vernon@bristol-cathedral.co.uk)**

### Facilities

---

- Toilets: female, male, accessible (gender neutral) and baby change.
- There are no storage facilities for holding baggage whilst visiting the Cathedral. You must keep your personal belongings with you at all times.